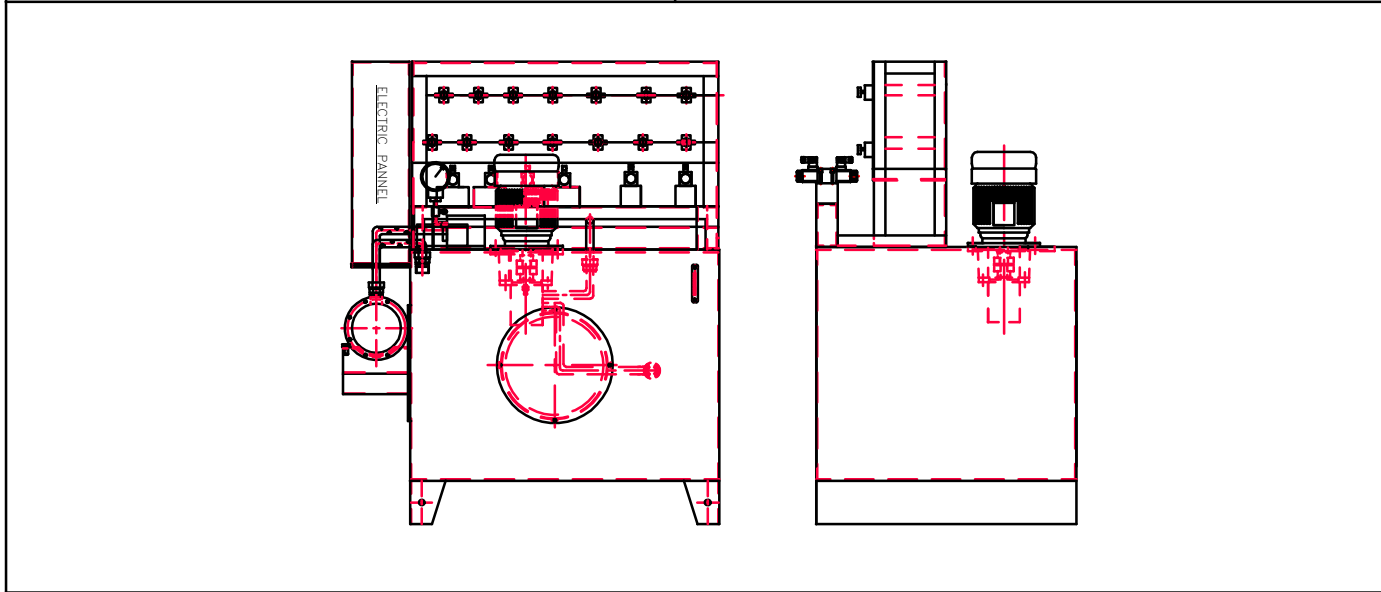


<b>CMD</b> <b>HPU/11.11</b>	<b>Hydraulic Power Units</b> <b>type HPU</b>	LOGO  CM Hydro Systems Pvt Ltd
Replaces : HPU/03.10		

**Features :**

- Options of float switch, temperature controller, Accumulator, etc
- Customized as per requirement
- Easy maintenance

Space for 3-D view



Ordering code

<b>HPU</b>									*
									Further details to specify
Oil Reservoir  150 Lts =150 250 Lts =250 500 Lts =500 800 Lts =800 1000 Lts =1000								No. of DC Valve Stations in Manifold block 1= Single station 2= Double station 3= Triple station	
Reservoir Material  Carbon Steel =0 (Std) (Other materials on request)								Unloading DC Valves (NG6 or NG10 based on requirement) 0= Solenoid Operated 24V DC (Std) 1= Solenoid Operated 110V AC 2= Solenoid Operated 220V AC 3= Hand Operated	
Electric Motors in HP (As per requirement) (Refer table for selection criteria) 5, 7.5, 10, 12.5, 15, 20, 25, 30, 40, 50, 60, 75								Heat Exchangers/Oil coolers 1= With Oil Cooler 2= With out Oil Cooler	
Pump Gear Pump =1 Vane Pump =2 Axial Piston Pump =3								Return Line filters (25 Microns) 1= Without clog indicator 2= With Clog indicator	
								Electrical/Electronics 1= With Electrical/Electronics 2= Without Electrical/Electronics	

CMD HPU/11.11	<b>Hydraulic Power Units type HPU</b>	LOGO
Replaces : HPU/03.10		CM Hydro Systems Pvt Ltd

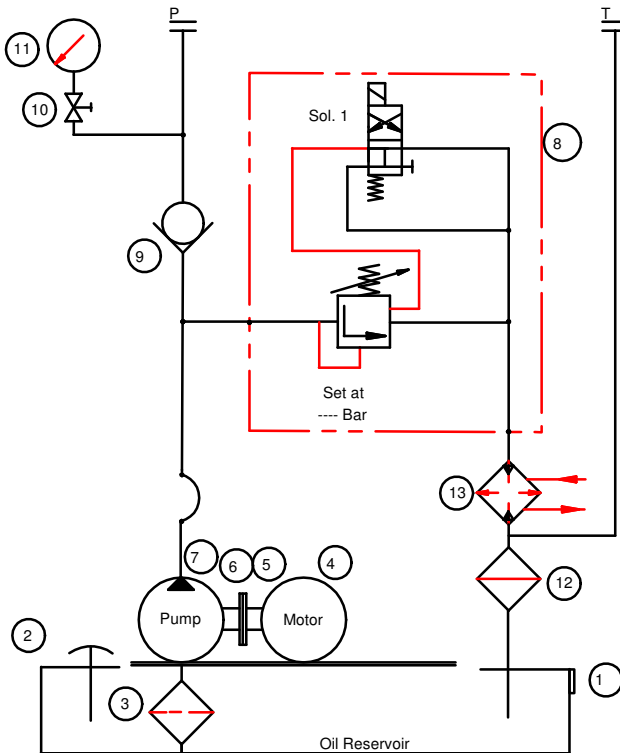
Technical data (for other sizes and special application, please contact [mktg@cmhydraulics.com](mailto:mktg@cmhydraulics.com))

Maximum operating pressure	bar	250 Bar
Reservoir	Ltrs	100, 150, 250, 400, 600, 800, 1000
Power Supply		415 ± 10 V 50 Hz AC No. of Poles 4 IP 55 Protection
Pressure fluid		Mineral oil (HL, HLP) to DIN 51 524; Fast bio-degradable pressure fluids to VDMA 24 568; HTEG (rape seed oil); HEPG (polyglycol); HEES (synthetic ester); other fluids on request
Return line Filters capacity (3~5 Times of flow capacity)	Microns	25 (Std) (higher microns on request)
Heat Exchangers (25% of Motor capacity)	Type	Shell & Tube (Std) (Air blast & Plate type on request)
Pressure fluid - temperature range	°C	- 30 to + 80
Viscosity range	mm <sup>2</sup> /s	2.8 to 500
Degree of contamination		Maximum permissible degree of contamination of the fluid is to NAS 1638 class 9.

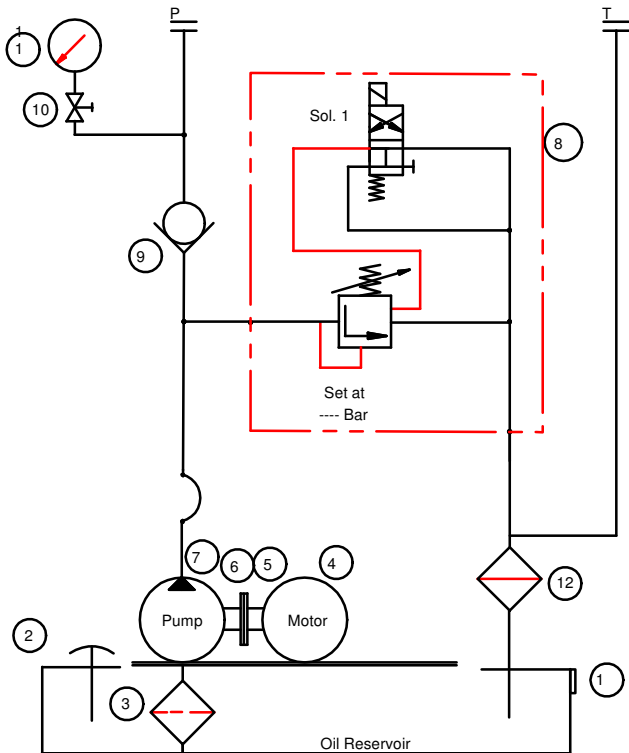
Motor Selection table (in HP)

Pr. Range Flow (CC)/Rev (Bar)	100	150	250
12	5	7.5	12.5
16	7.5	10	15
23	10	15	25
28	12.5	20	30
32	12.5	20	30
45	20	30	50
56	25	40	60
63	25	40	60
80	35	50	75
90	40	60	-

Typical Circuit :



With Heat Exchanger



With out Heat Exchanger

1. Oil Level Indicator
2. Filler Breather
3. Suction Strainer
4. Electrical Motor
5. Bell Housing
6. Coupling
7. Hydraulic Pump
8. Unloading block with DC Valve
9. Non Return valve
10. Gauge Isolator
11. Pressure Gauge
12. Return Line Filter
13. Heat Exchanger

CMD  
HPUM/11.11

# Hydraulic Power Units-Mini type HPU-M

LOGO

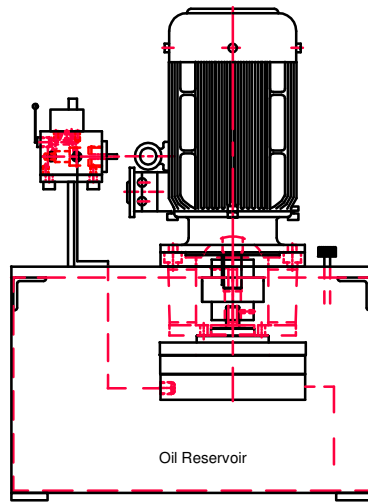
Replaces : HPUM/03.10

CM Hydro Systems Pvt Ltd

**Features :**

- Compact Design
- Customized as per requirement
- Portable with trolley (Option)
- Easy maintenance

Space for 3-D view



**Ordering code**



**Oil Reservoir**

20 Lts	=20
40 Lts	=40
60 Lts	=60

**Reservoir Material**

Carbon Steel	=1
Stainless Steel	=2
Aluminium	=3

**Electric Motors (Refer table for selection criteria)**

0.5 HP	=0.5
1 HP	=1
2 HP	=2
3 HP	=3
5 HP	=5

**Further details to specify**

**No. of DC Valve Stations  
in Manifold block**

1=	Single station
2=	Double station
3=	Triple station

**Unloading DC Valves (NG 6 Size)**

0=	Solenoid Operated 24V DC (Std)
1=	Solenoid Operated 110V AC
2=	Solenoid Operated 220V AC
3=	Hand Operated

**Heat Exchangers/Oil coolers**

1=	With Oil Cooler (> 9 LPM)
2=	With out Oil Cooler

CMD HPUM/11.11	Hydraulic Power Units-Mini type HPU-M	LOGO
Replaces : HPUM/03.10		CM Hydro Systems Pvt Ltd

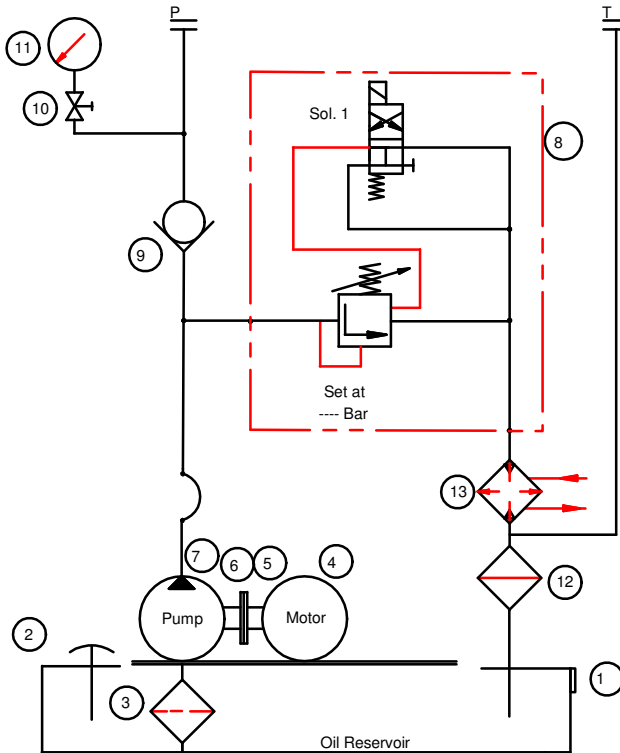
Technical data (for other sizes and special application, please contact [mktg@cmhydraulics.com](mailto:mktg@cmhydraulics.com))

Maximum operating pressure	bar	700 Bar (Refer Table)
Reservoir	Ltrs	20, 40, 60
Power Supply		415 ± 10 V 50 Hz AC No. of Poles 4 IP 55 Protection
Pressure fluid		Mineral oil (HL, HLP) to DIN 51 524; Fast bio-degradable pressure fluids to VDMA 24 568; HTEG (rape seed oil); HEPG (polyglycol); HEES (synthetic ester); other fluids on request
Return line Filters capacity	Microns	25
Pressure fluid - temperature range	°C	- 30 to + 80
Viscosity range	mm <sup>2</sup> /s	2.8 to 500
Degree of contamination		Maximum permissible degree of contamination of the fluid is to NAS 1638 class 9.

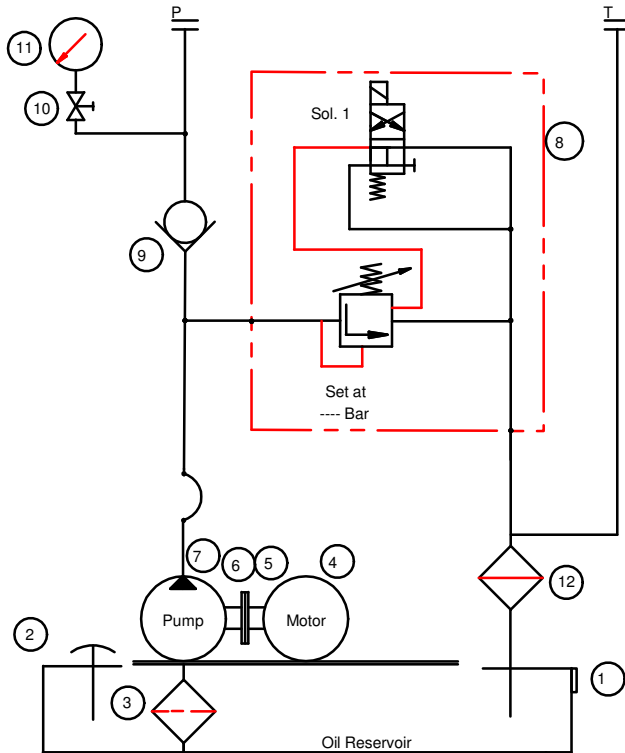
Motor Selection table (in HP)

Pr. Range Flow (CC)/Rev (Bar)	Upto 60	60 ~ 150	150 ~ 300	300 ~ 500	500 ~ 700
1.5	0.5	1	2	3	5
2.0	0.5	2	3	5	-
2.5	1	2	3	5	-
3.0	1	2	5	-	-
3.5	1	3	5	-	-
4.0	1	3	5	-	-
4.5	1.5	3	5	-	-
5.0	1.5	3	5	-	-
5.5	1.5	5	-	-	-
7.0	2	5	-	-	-
8.0	2	5	-	-	-
8.5	2	5	-	-	-

Typical Circuit :



With Heat Exchanger



With out Heat Exchanger

1. Oil Level Indicator
2. Filler Breather
3. Suction Strainer
4. Electrical Motor
5. Bell Housing
6. Coupling
7. Hydraulic Pump
8. Unloading block with DC Valve
9. Non Return valve
10. Gauge Isolator
11. Pressure Gauge
12. Return Line Filter
13. Heat Exchanger