

CMD
NV/11.11

Needle valve type NV

LOGO

CM Hydro Systems Pvt Ltd

Replaces : NV/10.09

Size : 06 to 15

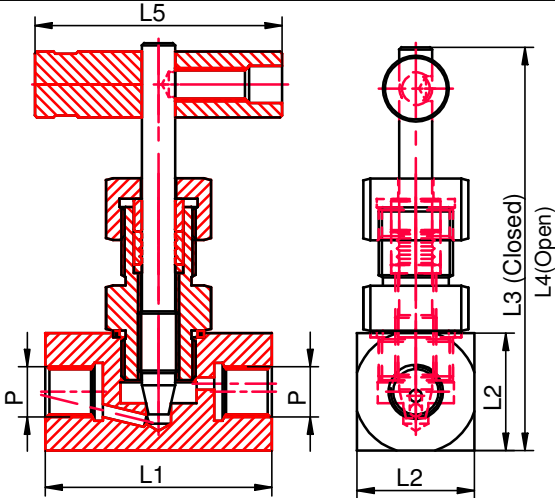
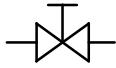
up to 1000 bar

up to 450 L/min.

Features :

- For Inline mounting
- For Panel Mounting
- Material Steel & SS

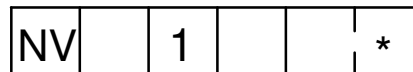
Symbols :



Size	P	L1	L2	L3	L4	L5
06	1/4" BSP	55	28.5	98	108	60
08	3/8" BSP	65	28.5	99	108	60
10	1/2" BSP	70	32	101	112	60
15	3/4" BSP	90	36	103	115	60

(For 400 Bar Pressure)

Ordering code



Nominal size 06
Nominal size 08
Nominal size 10
Nominal size 15

=06
=08
=10
=15

Further details to specify
Revision status index

Material - Steel
Material - SS

=1
=2

400= Up to 400 Bar
700= Up to 700 Bar

Technical data (for special application, please contact mktg@cmhydraulics.com)

Maximum operating pressure	bar	300, 700~1000 Bar			
Maximum flow	Size	06	08	10	15
	L/min.	18	36	60	150
Pressure fluid		Mineral oil (HL,HLP) to DIN 51 524; Fast bio-degradable pressure fluids to VDMA 24 568;HTEG (rape seed oil); HEPG (polyglycol); HEES (synthetic ester); other fluids on request			
Pressure fluid - temperature range	°C	- 30 to + 80			
Viscosity range	mm ² /s	2.8 to 500			
Degree of contamination		Maximum permissible degree of contamination of the fluid is to NAS 1638 class 9.			
Weight	Size	06	08	10	15
	Kg.	0.55	0.55	0.75	0.8

CMD
TCNRM/11.11

Throttle cum Non Return Valve Modularity TCNRM

LOGO

Replaces : TCNRM 10.09

Size : 06 & 10

up to 315 bar

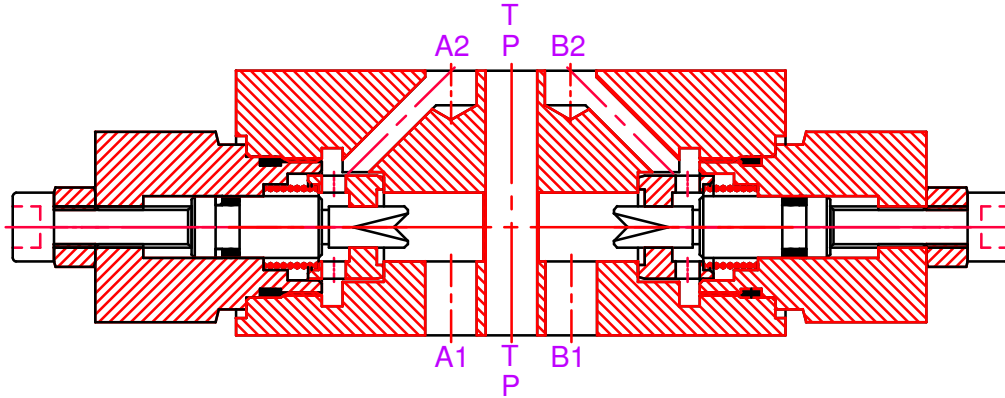
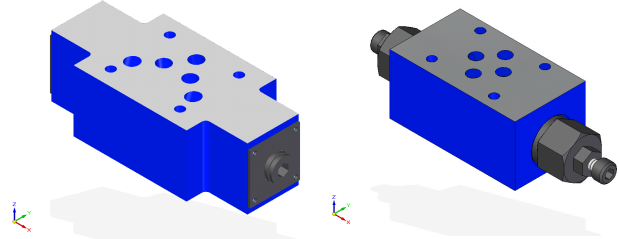
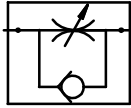
up to 100 L/min.

CM Hydro Systems Pvt Ltd

Features :

- Modular construction (Subplate mounting)
- Material Steel & SS
- Fine throttling adjustments

Symbols :



Ordering code

TCNRM 06 AB 1 *

Nominal size 06
Nominal size 10

=06
=10

Throttling Port A & B
Throttling Port A
Throttling Port B

=AB
=A
=B

Further details to specify

Revision status index

- 0= Cracking pressure 0 bar
 - 1= Cracking pressure 1 bar
 - 2= Cracking pressure 2 bar
 - 3= Cracking pressure 3 bar
 - 5= Cracking pressure 5 bar
- } Check Valve
Cracking pressure

Technical data (for other sizes and special application, please contact mktg@cmhydraulics.com)

Maximum operating pressure	bar	315 Bar	
Maximum flow	Size	06	10
	L/min.	40	100
Pressure fluid	Mineral oil (HL,HLP) to DIN 51 524; Fast bio-degradable pressure fluids to VDMA 24 568;HTEG (rape seed oil); HEPG (polyglycol); HEES (synthetic ester); other fluids on request		
Pressure fluid - temperature range	°C	- 30 to + 80	
Viscosity range	mm ² /s	2.8 to 500	
Degree of contamination	Maximum permissible degree of contamination of the fluid is to NAS 1638 class 9.		
Weight	Size	06	10
	Kg.	1.1	3.7

CMD
TCNRM/11.11

Throttle cum Non Return Valve Modularity TCNRM

LOGO

Replaces : TCNRM 10.09

Size : 06 to 25

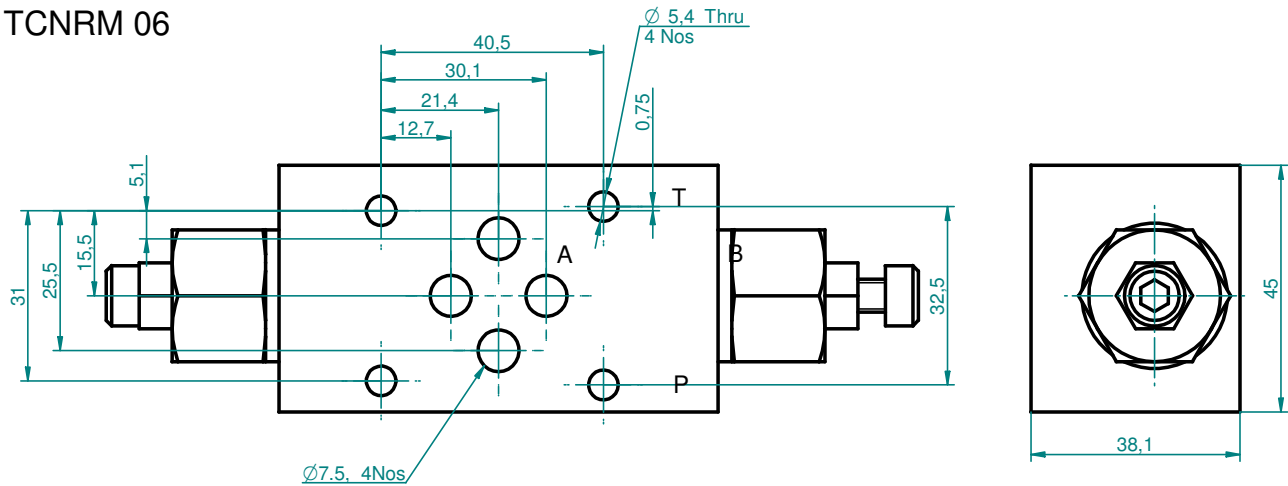
up to 315 bar

up to 100 L/min.

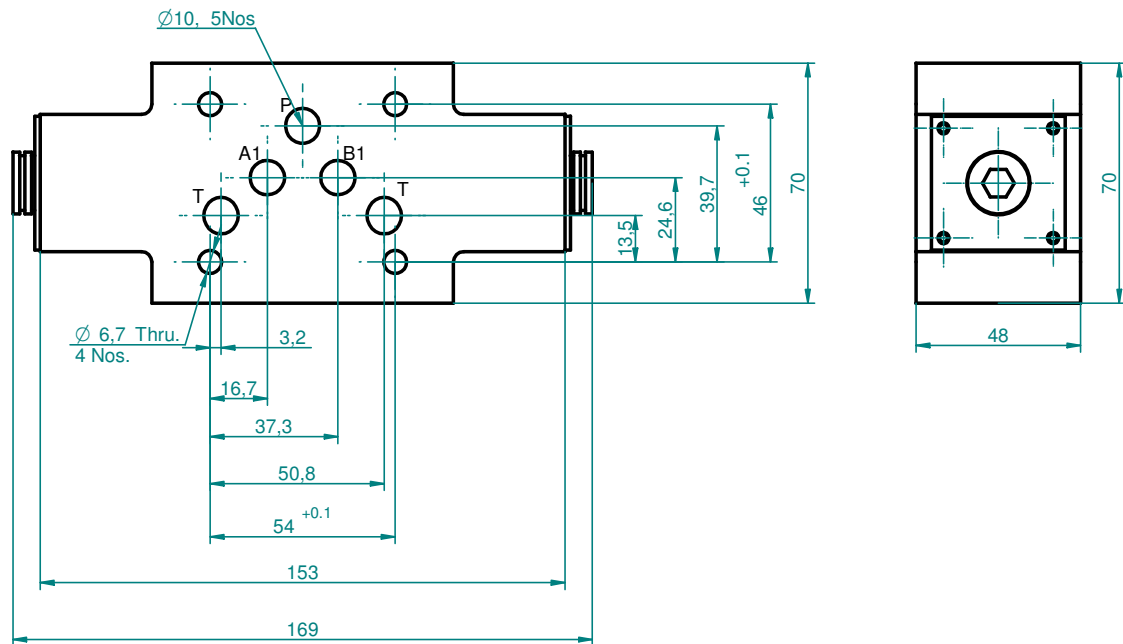
CM Hydro Systems Pvt Ltd

Dimensional Details

TCNRM 06



TCNRM 10



**CMD
TCNRT/11.11**

Throttle cum Non Return Valve type TCNRT

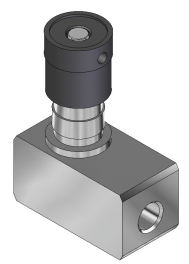
LOGO

Replaces : TCNRT 10.09

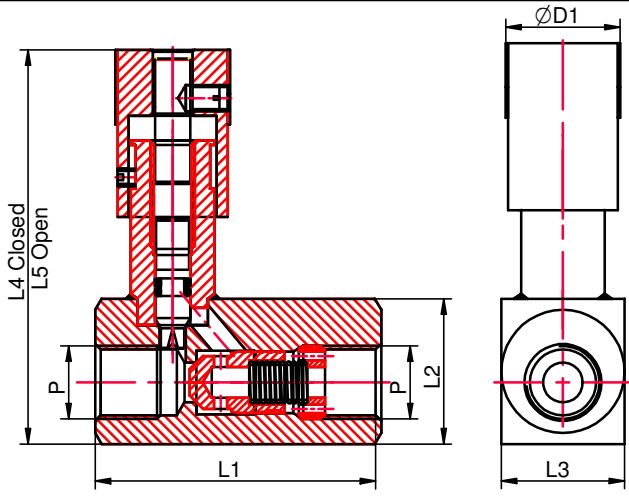
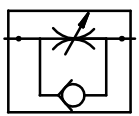
Size : 06 to 15 up to 400 bar up to 450 L/min.

CM Hydro Systems Pvt Ltd

- Features :**
- For Inline mounting
 - Material Steel & SS
 - Color Scale for better repeatability

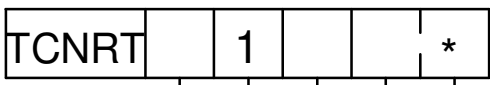


Symbols :



Size	P	L1	L2	L3	L4	L5	ØD1
06	1/4" BSP	58	30	30	80	85	26
08	3/8" BSP	65	33	28	90	95	26
10	1/2" BSP	90	35	35	104	109	27
15	3/4" BSP	100	45	45	114	119	29

Ordering code



Nominal size 06 =06
 Nominal size 08 =08
 Nominal size 10 =10
 Nominal size 15 =15

Material - Steel =1
 Material - SS =2

Further details to specify

Revision status index

- 0= Cracking pressure 0 bar
- 1= Cracking pressure 1 bar
- 2= Cracking pressure 2 bar
- 3= Cracking pressure 3 bar
- 5= Cracking pressure 5 bar

Technical data (for other sizes and special application, please contact mktg@cmhydraulics.com)

Maximum operating pressure	bar	400 Bar			
Maximum flow	Size	06	08	10	15
	L/min.	18	36	60	150
Pressure fluid		Mineral oil (HL,HLP) to DIN 51 524; Fast bio-degradable pressure fluids to VDMA 24 568;HTEG (rape seed oil); HEPG (polyglycol); HEES (synthetic ester); other fluids on request			
Pressure fluid - temperature range	°C	- 30 to + 80			
Viscosity range	mm ² /s	2.8 to 500			
Degree of contamination		Maximum permissible degree of contamination of the fluid is to NAS 1638 class 9.			
Weight	Size	06	08	10	15
	Kg.	0.46	0.65	0.85	1.6