

CMD  
STL/03.10

# Shuttle Valve type STL



Replaces : NIL

Size : 06

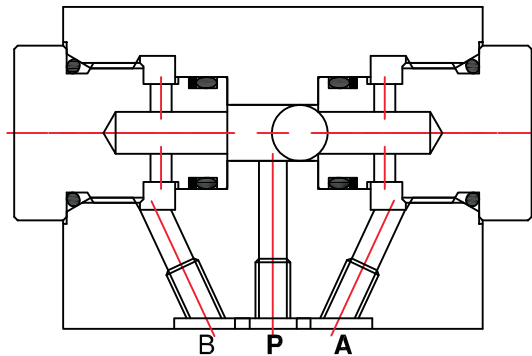
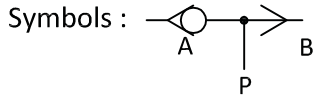
up to 315 bar

up to 18 L/min.

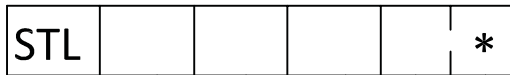
CM Hydro Systems Pvt. Ltd

**Features :**

- Port P connected to both A & B
- Isolates Port A & Port B from each other
- Available in subplate & threaded construction (see ordering code)



**Ordering code**



Nominal size 06

=06

Threaded type  
Subplate type

=T  
=S

Further details to specify

Revision status index

Port Connection (for threaded)

- 1= 1/4" BSP
- 2= 3/8" BSP

**Technical data** (for other sizes and special application, please contact [mktg@cmhydraulics.com](mailto:mktg@cmhydraulics.com))

Maximum operating pressure	bar	315
Maximum flow	Size	06
	L/min.	18
Pressure fluid	Mineral oil (HL,HLP) to DIN 51 524; Fast bio-degradable pressure fluids to VDMA 24 568;HTEG (rape seed oil); HEPG (polyglycol); HEES (synthetic ester); other fluids on request	
Pressure fluid - temperature range	°C	- 30 to + 80
Viscosity range	mm <sup>2</sup> /s	2.8 to 500
Degree of contamination	Maximum permissible degree of contamination of the fluid is to NAS 1638 class 9.	

CMD  
STL/03.10

# Shuttle Valve type STL



Replaces : NIL

Size : 06

up to 315 bar

up to 18 L/min.

CM Hydro Systems Pvt. Ltd

## Mounting Dimensions

