

CMD
RVP/02.10

Relief valve type RVP



Replaces : NIL

Size : 10 to 30

up to 400 bar

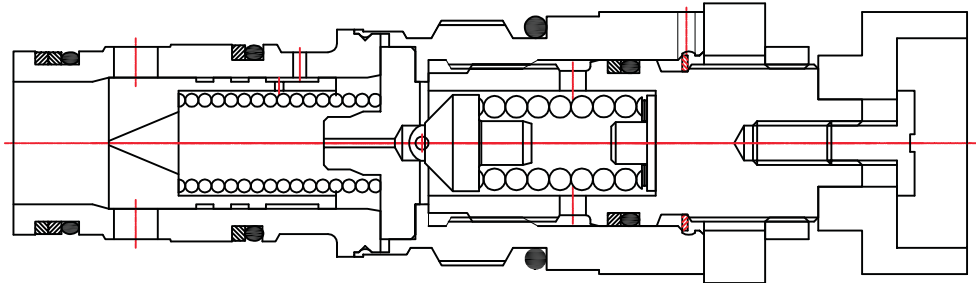
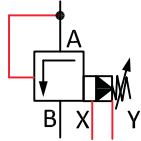
up to 450 L/min.

CM Hydro Systems Pvt. Ltd

Features :

- Cartridge Type
- Pilot operated Spool Type
- Adjustable Pressure settings Set Screw type
Hand Knob type

Symbols :



Ordering code

RVP	S	10			*
-----	---	----	--	--	---

Set Screw Adjustment =S
Hand Knob Adjustment =H

Nominal size 10 =10
Nominal size 20 =20
Nominal size 30 =30

Further details to specify

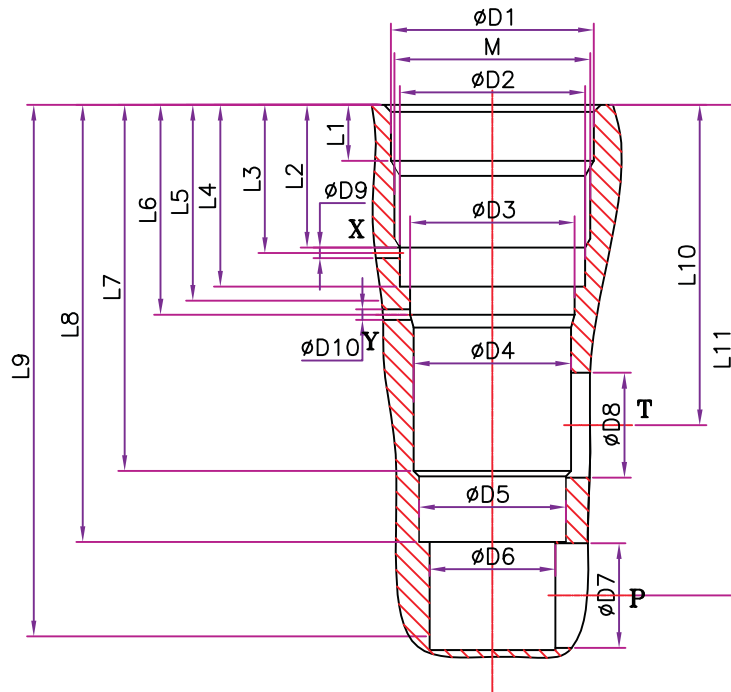
50 = Pr. 50 Bar
100 = Pr. 100 Bar
200 = Pr. 200 Bar
315 = Pr. 315 Bar
400 = Pr. 400 Bar

K= Cartridge Type
T= Threaded port body (Contact us for details)
S= Subplate Connections (Contact us for details)

Technical data (for other sizes and special application, please contact mktg@cmhydraulics.com)

Maximum operating pressure	bar	400 Bar			
Operating pressure	bar	25,50,100,200,315,400			
Maximum flow	Size	10	20	30	
	L/min.	120	250	400	
Pressure fluid		Mineral oil (HL,HLP) to DIN 51 524; Fast bio-degradable pressure fluids to VDMA 24 568;HTEG (rape seed oil); HEPG (polyglycol); HEES (synthetic ester); other fluids on request			
Pressure fluid - temperature range	°C	- 30 to + 80			
Viscosity range	mm ² /s	2.8 to 500			
Degree of contamination		Maximum permissible degree of contamination of the fluid is to NAS 1638 class 9.			

CAVITY DETAILS



Size	ØD1	M	ØD2	ØD3	ØD4	ØD5	ØD6	ØD7	ØD8	L1	L2	L3	L4	L5
10	29	M28x1.5	26.5	23.5	22.5	21	18	15	15	8	20	20.5	26	28
20	29	M28x1.5	26.5	25.5	24.5	23	18	15	15	8	20	20.5	26	28
30	32	M30x1.5	28.5	27.5	26.5	25	18	15	15	8	20	20.5	26	28

Size	L6	L7	L8	L9	L10	L11	ØD9	ØD10
10	30	52	62.5	78	46	70	3	3
20	30	52	62.5	78	46	70	3	3
30	30	52	62.5	78	46	70	3	3