

CMD
NRS/10.09

Non Return valve type NRS



Replaces : NIL

Size : 06 to 30

up to 315 bar

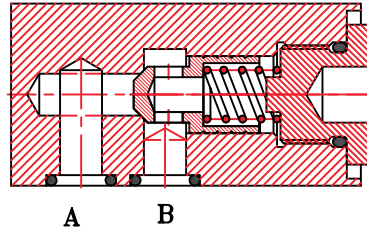
up to 450 L/min.

CM Hydro Systems Pvt. Ltd

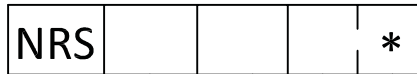
Features :

- For Subplate mounting
- Leakage-free in one direction
- Various cracking pressure, optional (see ordering code)

Symbols :  
(without spring)



Ordering code



Nominal size 06
Nominal size 10
Nominal size 20
Nominal size 30

=06
=10
=20
=30

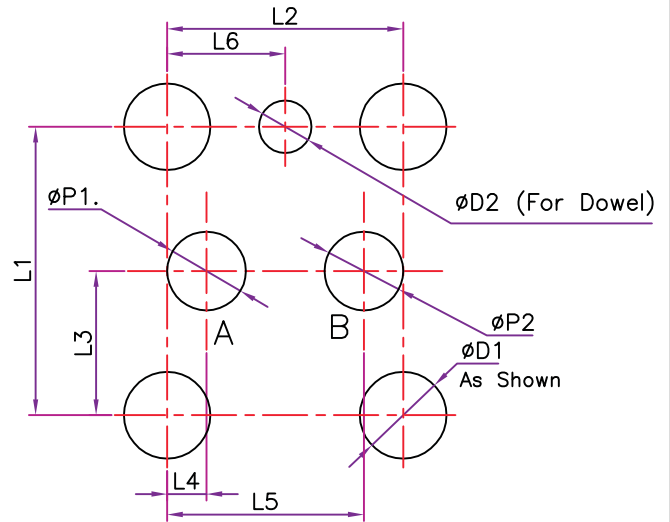
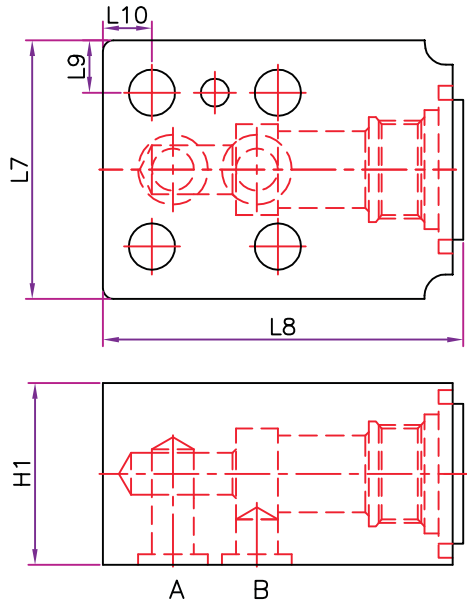
Further details to specify

Revision status index

- | | | |
|----|------------------|---------------------|
| 0= | Without spring | } Cracking pressure |
| 1= | 1 Bar (Standard) | |
| 2= | 2 Bar | |
| 3= | 3 Bar | |
| 5= | 5 Bar | |

Technical data (for other sizes and special application, please contact mktg@cmhydraulics.com)

Maximum operating pressure	bar	315			
Cracking pressure	bar	0,1,2,3 & 5			
Maximum flow	Size	06	10	20	30
	L/min.	18	60	250	450
Pressure fluid	Mineral oil (HL,HLP) to DIN 51 524; Fast bio-degradable pressure fluids to VDMA 24 568;HTEG (rape seed oil); HEPG (polyglycol); HEES (synthetic ester); other fluids on request				
Pressure fluid - temperature range	°C	- 30 to + 80			
Viscosity range	mm ² /s	2.8 to 500			
Degree of contamination	Maximum permissible degree of contamination of the fluid is to NAS 1638 class 9.				
Weight	Size	06	10	20	30
	Kg.	0.3	0.9	2.6	9



Size	L1	L2	L3	L4	L5	L6	ØP1	ØP2	ØD1	ØD2	L7	L8	L9	L10	H1
06	22	18	11	3	15	9	6	6	6.6	4	37	52	7.5	7	26
10	36	33	18	6	27	16.5	10	10	9	4	55	79	9.5	9	38
20	50	55	25	10	45	27.5	20	20	11	6.3	70	103	10	10	55
30	75	85	37.5	20	65	42.5	30	30	14	7	105	162	15	15	82