

CMD
FCVP/02.10

Pr. Compensated Flow Control Valve. Type FCVP



Replaces : NIL

Size : 10

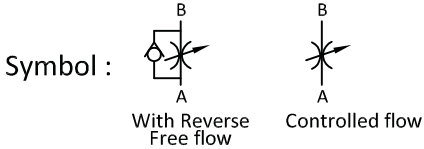
up to 315 bar

up to 32 L/min.

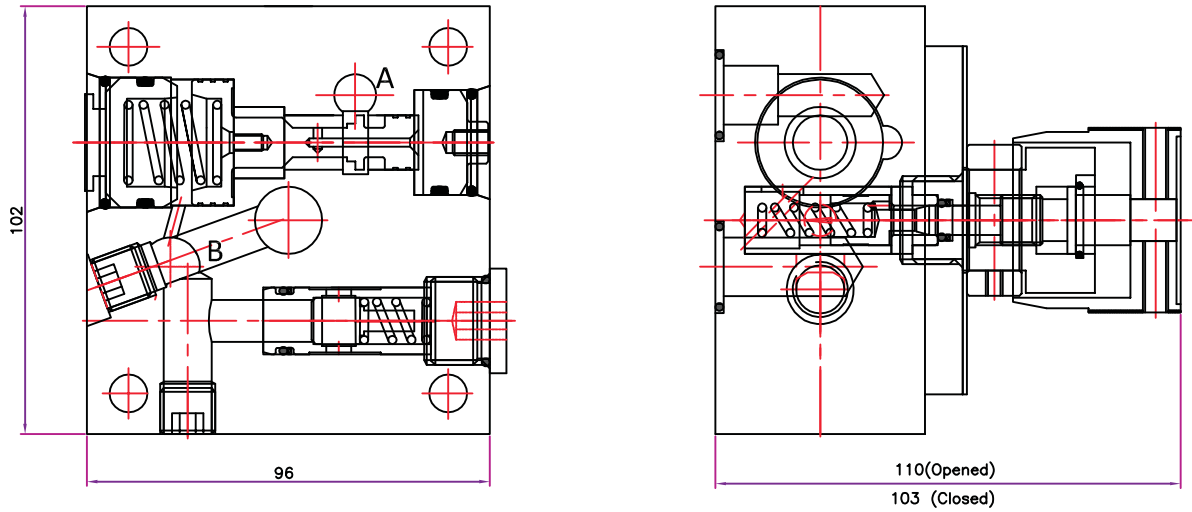
CM Hydro Systems Pvt. Ltd

Features :

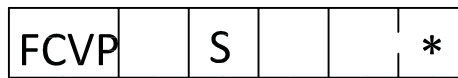
- Pressure compensated
- Optional reverse free flow
- Fine flow adjustable
- few rotations of hand knob for ease of setting



Sectional view



Ordering code



Pr. Compensated Flow Control Valve

Nominal size 10

=10

Subplate type
Threaded

=S
=T

Further details to specify

Flow Capacity

- 4= 4 LPM
- 8= 8 LPM
- 16= 16 LPM
- 32= 32 LPM

- 2= Two way Controlled flow
- 1= Reverse free flow

CMD
FCVP/02.10

Pr. Compensated Flow Control Valve. Type FCVP



Replaces : NIL

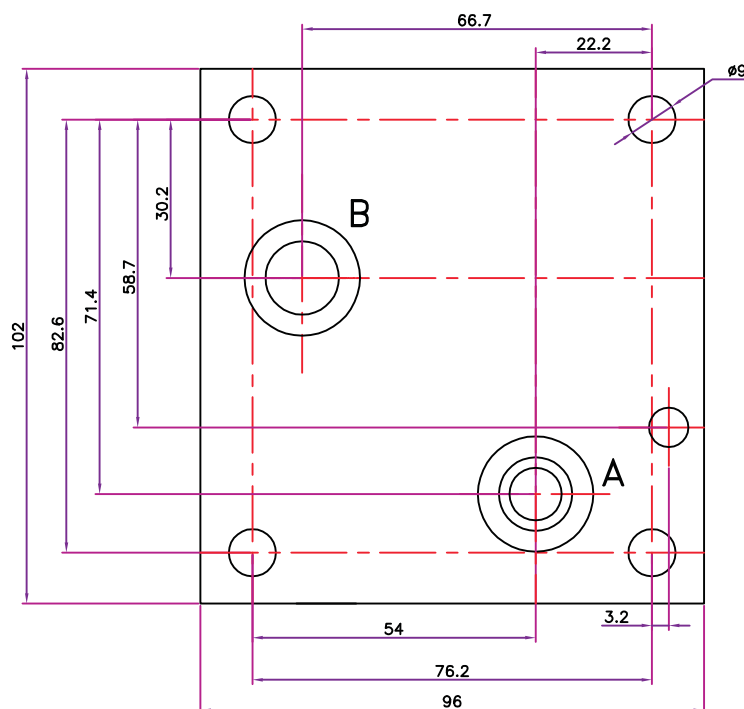
Size : 10

up to 315 bar

up to 32 L/min.

CM Hydro Systems Pvt. Ltd

Mounting dimensions



Technical data (for special application, please contact us)

Mounting style	Threaded & Subplate Mounting	
Mounting position	optional	
Cracking pressure (If One way control selected)	bar	0,1,2,3 & 5
Maximum operating pressure	bar	315
Flow Direction	Controlled flow from port A to B	
Maximum flow	L/min.	4 LPM, 8 LPM, 16 LPM, 32 LPM
Pressure fluid	Mineral oil (HL,HLP) to DIN 51 524; Fast bio-degradable pressure fluids to VDMA 24 568;HTEG (rape seed oil); HEPG (polyglycol); HEES (synthetic ester); other fluids on request	
Pressure fluid - temperature range	°C	- 30 to + 80
Viscosity range	mm ² /s	2.8 to 500
Degree of contamination	Maximum permissible degree of contamination of the fluid is to NAS 1638 class 9.	
Weight	Kg.	5